



PRISON RAPE ELIMINATION ACT ANNUAL REPORT - 2023

PREA was established and signed into law in 2003 by President George Bush. PREA addresses the problem of sexual abuse and sexual harassment of both adults and juveniles in the custody of U.S. correctional facilities, including community confinement facilities. Major provisions address the development of standards for the detection and prevention of prison rape. Community Counseling and Correctional Services has adopted a ZERO TOLERANCE policy on any sexual misconduct/sexual abuse or sexual harassment of in our facilities. These measures are being accomplished through new policies, procedures and training of all clients, staff and volunteers.

The Prison Rape Elimination Act (PREA) requires that each facility collect and review data "...in order to assess and improve the effectiveness of sexual abuse prevention, detection, and response policies, practices, and training." (28 CFR §115.88, 115.288 and 115.388) This report works to meet these standards as well as:

- Identify corrective action taken to address any problem areas in the past year.
- Compare PREA related data to previous year's data and
- Identify problem areas to be addressed in the future.

*Definitions & Acronyms:

Sexual Harassment: Repeated verbal comments or gestures of a sexual nature to a resident by another resident, staff member, contractor or volunteer, including demeaning references to gender, sexually suggestive or derogatory comments about body or clothing, or obscene language or gestures.

Sexual Misconduct/Abuse: Any of the following acts toward a resident in custody by another resident, staff member, contractor or volunteer with or without consent: contact between genitals, between mouth and genitals, penetration of genitals or anus by hand, finger, object or other instrument; intentional touching/contact, either directly or through clothing of the genital, anus, groin, breast, inner thigh or the buttocks that is unrelated to official duties or where a resident, staff member, contractor or volunteer has the intent to abuse, arouse or gratify sexual desire; any display by a resident, staff member, contractor or volunteer of his/her uncovered genitalia, buttocks or breast in the presence of a resident or voyeurism by a resident, staff member, contractor or volunteer.

Substantiated: The allegation is supported by sufficient factual evidence.

Unsubstantiated: The allegation is not supported by sufficient factual evidence.

Undetermined: The complainant withdraws the complaint or allegation, cannot be located or is uncooperative with the investigation.

Unfounded: The allegation is false or has no validity.

CCCS Inc. embraced the principles of eliminating sexual misconduct and sexual harassment years before the PREA standards had been established. CCCS Inc. established new policies and procedures to meet and where possible, exceed PREA standards. This includes strong Zero Tolerance, Retaliation and Investigation policies and procedures. The Zero Tolerance policy is for the protection of both clients and staff and for the elimination of sexual misconduct within our facilities. The Retaliation procedure is to protect an individual from retaliation after reporting a violation. The Investigation procedure is used to determine if allegations are founded or not. Investigations are also used to determine if changes are needed to be made in policies, procedures, facility, staffing, personnel assignments or supervision. All allegations are taken seriously and investigated thoroughly.

Several community Sexual Assault Trauma Centers have partnered with the CCCS Inc. facilities to provide excellent access to community providers who can assist when issues concerning sexual assault or abuse are detected.

PREA orientation is provided to clients who enter CCCS Inc. facilities. Clients are informed of their right to be free from sexual abuse and sexual harassment. Additionally, clients are informed about CCCS Inc.'s Zero Tolerance policy. In addition to orientation, each resident who spends more than 10 days at CCCS Inc. facility receives additional education on the Prison Rape Elimination Act.

CCCS Inc. has completed PREA audits at each of its facilities and all facilities have been certified as PREA Compliant. Each program's PREA audit report is available and accessible to the public through the CCCS web site, www.cccscorp.com.

The number of PREA related investigations in 2022 was 9 compared to 13 to 2021. This represents an 30% decrease in PREA related allegations. Compared to 4 substantiated allegations occurring in 2021, there was a 50% decrease in substantiated reports in 2022 with 2 total substantiated allegations. Of the substantiated allegations occurring in 2022, there were no substantiated allegations were of inmate on inmate sexual abuse and 2 staff on inmate sexual misconduct. The decrease in 2022 may be due to COVID as facilities faced lockdowns for several weeks or months and the number of staff was limited due to COVID restrictions.

*Definitions paraphrased from the Department of Justice PREA Standards definitions.

Data Snapshot

YEAR	ALLEGATIONS	SUBSTANTIATED
2023	14	5
2022	9	2
2021	13	4
2020	11	3
2019	22	8
2018	20	6
2017	28	6
2016	20	3

2023 PREA Data: Community, Counseling and Correctional Services, Inc.

CCCS PROGRAM	ALLEGATIONS	UNSUBSTANTIATED	UNFOUNDED	SUBSTANTIATED	PENDING
Bismarck Transition Center	4	2	0	2	0
Butte Pre-Release/ Women's Transition Center	1	0	0	1	0
CCP Butte	2	0	0	2	0
Gallatin County Re-Entry Program	0	0	0	0	0
Martin Hall Juvenile Facility	4	0	4	0	0
Nexus					
S.T.A.R.T.	3	1	2	0	0
Watch West and CCP West	0	0	0	0	0
Total	14	3	6	5	0

2022 PREA Data: Community, Counseling, and Correctional Services, Inc.

CCCS PROGRAM	ALLEGATIONS	UNSUBSTANTIATED	UNFOUNDED	SUBSTANTIATED	PENDING
Bismarck Transition Center	1	1	0	0	0
Butte Pre-Release/ Women's Transition Center	1	0	1	0	0
CCP Butte	0	0	0	0	0
Gallatin County Re-Entry Program	0	0	0	0	0
Martin Hall Juvenile Facility	1	0	1	0	0
Nexus	2	1	1	0	0
S.T.A.R.T.	3	1	1	1	0
Watch West and CCP West	1	0	0	1	0
Total	9	3	4	2	0

2021 PREA Data: Community, Counseling, and Correctional Services, Inc.

CCCS PROGRAM	ALLEGATIONS	UNSUBSTANTIATED	UNFOUNDED	SUBSTANTIATED	PENDING
Bismarck Transition Center	3	1	1	1	0
Butte Pre-Release/ Women's Transition Center	2	0	0	2	0
CCP Butte	1	1	0	0	0
Gallatin County Re-Entry Program	0	0	0	0	0
Martin Hall Juvenile Facility	2	2	0	0	0
Nexus	2	2	0	0	0
S.T.A.R.T.	1	0	1	0	0
Watch East	0	0	0	0	0
Watch West and CCP West	2	1	0	1	0
Total	13	7	1	4	0

2020 PREA Data: Community, Counseling, and Correctional Services, Inc.

CCCS PROGRAM	ALLEGATIONS	UNSUBSTANTIATED	UNFOUNDED	SUBSTANTIATED	PENDING
Bismarck Transition Center	2	0	2	0	0
Butte Pre-Release/ Women's Transition Center	2	1	0	1	0
CCP Butte	0	0	0	0	0
Gallatin County Re-Entry Program	0	0	0	0	0
Martin Hall Juvenile Facility	0	0	0	0	0
Nexus	5	2	2	1	0
S.T.A.R.T.	1	0	1	0	0
Watch East	0	0	0	0	0
Watch West and CCP West	1	0	0	1	0
Total	11	3	5	3	0

2019 PREA Data: Community, Counseling, and Correctional Services, Inc.

CCCS PROGRAM	ALLEGATIONS	UNSUBSTANTIATED	UNFOUNDED	SUBSTANTIATED	PENDING
Bismarck Transition Center	5	3	1	1	0
Butte Pre-Release/ Women's Transition Center	1	1	0	0	0
CCP Butte	0	0	0	0	0
Gallatin County Re-Entry Program	0	0	0	0	0
Martin Hall Juvenile Facility	4	0	3	1	0
Nexus	3	0	2	1	0
S.T.A.R.T.	1	0	1	0	0
Watch East	1	0	1	0	0
Watch West and CCP West	7	1	1	5	0
Total	22	5	9	8	0

2018 PREA Data: Community, Counseling, and Correctional Services, Inc.

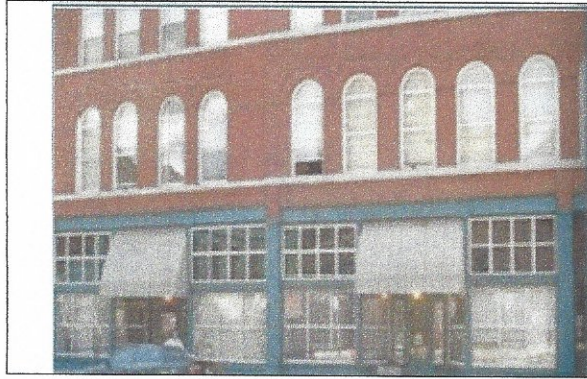
CCCS PROGRAM	ALLEGATIONS	UNSUBSTANTIATED	UNFOUNDED	SUBSTANTIATED	PENDING
Bismarck Transition Center	4	1	2	0	1
Butte Pre-Release/ Women's Transition Center	2	0	0	2	0
CCP Butte	2	1	0	1	0
Gallatin County Re-Entry Program	0	0	0	0	0
Martin Hall Juvenile Facility	6	4	2	0	0
Nexus	0	0	0	0	0
S.T.A.R.T.	4	1	2	1	0
Watch East	0	0	0	0	0
Watch West and CCP West	2	0	0	2	0
Total	20	7	6	6	1

2017 PREA Data: Community, Counseling, and Correctional Services, Inc.

CCCS PROGRAM	ALLEGATIONS	UNSUBSTANTIATED	UNFOUNDED	SUBSTANTIATED	PENDING
Bismarck Transition Center	10	3	6	1	0
Butte Pre-Release/ Women's Transition Center	4	1	1	2	0
CCP Butte	0	0	0	0	0
Gallatin County Re-Entry Program	0	0	0	0	0
Martin Hall Juvenile Facility	3	1	2	0	0
Nexus	0	0	0	0	0
S.T.A.R.T.	7	2	4	1	0
Watch East	1	0	0	1	0
Watch West and CCP West	3	1	1	1	0
Total	28	8	14	6	0

2016 PREA Data: Community, Counseling, and Correctional Services, Inc.

CCCS PROGRAM	ALLEGATIONS	UNSUBSTANTIATED	UNFOUNDED	SUBSTANTIATED	PENDING
Bismarck Transition Center	8	3	4	1	0
Butte Pre-Release/ Women's Transition Center	6	1	3	2	0
CCP Butte	1	0	1	0	0
Gallatin County Re-Entry Program	0	0	0	0	0
Martin Hall Juvenile Facility	0	0	0	0	0
Nexus	1	0	1	0	0
S.T.A.R.T.	2	1	1	0	0
Watch East	1	0	1	0	0
Watch West and CCP West	1	0	1	0	0
Total	20	5	12	3	0



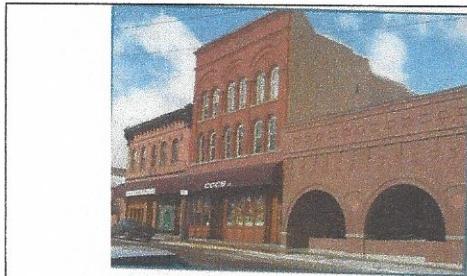
**BUTTE PRE-RELEASE CENTER
MEN'S PROGRAM (BPRC)**

**WOMEN'S TRANSITIONAL
CENTER (WTC)**

The Butte Pre-Release Center Men's Program and the Women's Transitional Center have been providing a broad array of State-of-the-art, evidence-based community correctional programs and treatment milieus to thousands of adult male and female offenders since the programs were respectively established in December of 1983 (BPRC) and June of 1992 (WTC).

In 2023, there was one allegation of a PREA related incident which was substantiated. This is the same as 2022, and a 50% decrease since 2021. The facility action plan remains focused on breaking the code of silence.

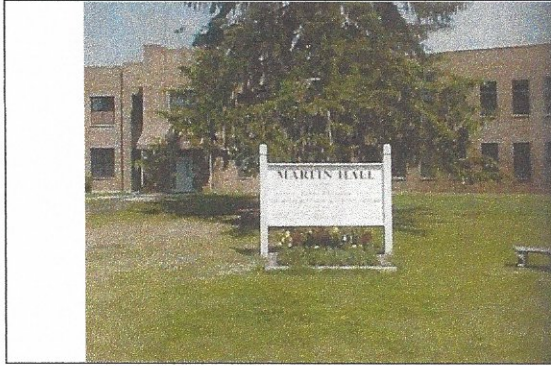
Continuous training for staff and clients regarding PREA education has made reporting easier and without fear of retaliation.



**THE CONNECTIONS CORRECTIONS
PROGRAMS EAST**

The Connections Corrections Programs East (Butte) continues to be one of the most dynamic and successful therapeutic communities in the country. Programs rely heavily on tradition, respect and standards. Clients are assured that they will complete their treatment in a safe and healthy environment. In return clients are expected to give 100% individual effort and be successful in their program. CCP East is a unique community correctional facility that serve the needs of the adult correctional population who are chemically dependent.

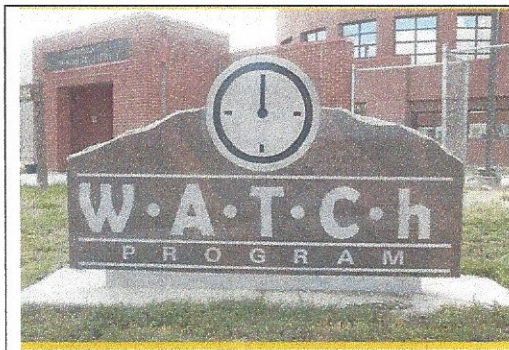
In 2022 there was one PREA allegation made for CCP East, which is an increase compared to allegations made in 2022. Staff and inmates continue to be provided with training and education regarding issues of sexual harassment and the means of reporting any PREA related incidents or concerns.



MARTIN HALL JUVENILE DETENTION FACILITY

CCCS Inc. has operated the Martin Hall Juvenile Detention Facility since November of 1999. Martin Hall is located on the campus of Eastern State Hospital in Medical Lake, Washington. The member counties are Adams, Asotin, Douglas, Ferry, Lincoln, Pen Oreille, Spokane, Stevens and Whitman Counties. Martin Hall provides valuable life skills, best practice programming and education to youth in custody.

Overall, there were four allegations during 2023 compared to the year prior (one), which is a substantial increase. All the allegations were determined to be unfounded, however by comparing the year of 2022, it shows that both staff and youth are educated in PREA and are reporting without fear of retaliation.



WATCH WEST PROGRAM / CCP WEST PROGRAM

CCCS Inc. has operated the WATCH West Program since February of 2002. The WATCH program is an authentic Modified Therapeutic Community that requires structure, format, energy and commitment. WATCH mimics a community with all the same stresses and pitfalls and allows the Clients to deal with these issues in a sober and pro-social manner under the guidance and direction of a dedicated and fully invested staff. Housed within the same facility is the CCP West program which, along with its counterpart in Butte at CCP East, continues to be one of the most dynamic and successful therapeutic communities in the country. Programs rely heavily on tradition, respect and standards. Clients are assured that they will complete their treatment in a safe and healthy environment. In return clients are expected to give 100% individual effort and be successful in their program. CCP East and West are unique community-correctional facilities that serve the needs of the adult correctional population who are chemically dependent.

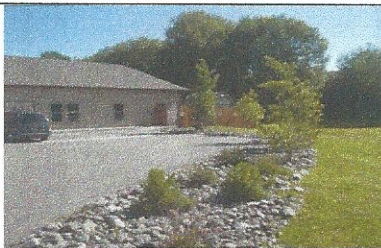
In 2023, there was a significant decrease with zero allegations reported. Comparatively, there was one allegation in 2022 and 2 reported allegations in 2021. Staff training remains a priority regarding red flags and appropriate response.



Bismarck Transition Center

The Bismarck Transition Center (BTC) remains a positive influence in the process of transitioning North Dakota clients back into their respective communities. This is a community-based correctional facility for eligible, non-violent adult male and female offenders. BTC provides an alternative to direct release in order to help adult offenders develop skills necessary for a successful transition into the community. Since the BTC opened its doors in August of 2002, the BTC has grown and expanded its contracted beds and treatment programs several times over. Treatment program modifications have been implemented to meet the needs of the North Dakota Department of Corrections and Rehabilitation.

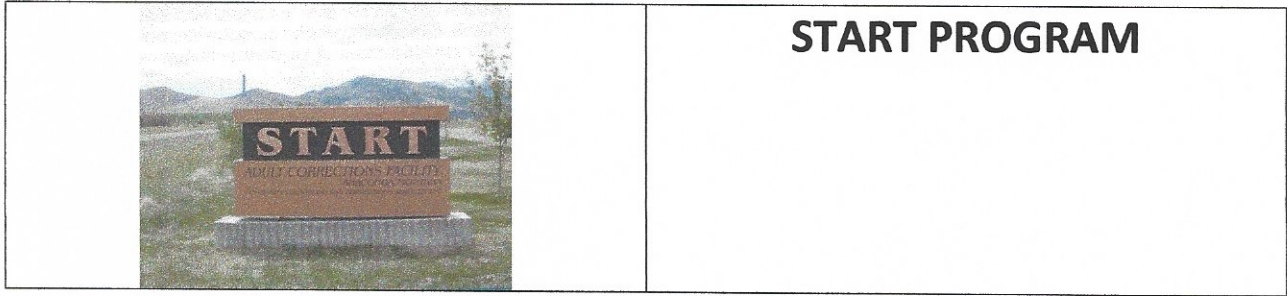
In 2023, there were four (4) PREA investigations compared to one in 2022. Two (2) of the allegations were substantiated. Although reports increased significantly, this shows the clients of the facility are both educated in how to report, but are not fearful of retaliation. Staff training continues to be a top priority.



Gallatin County Re-Entry Program

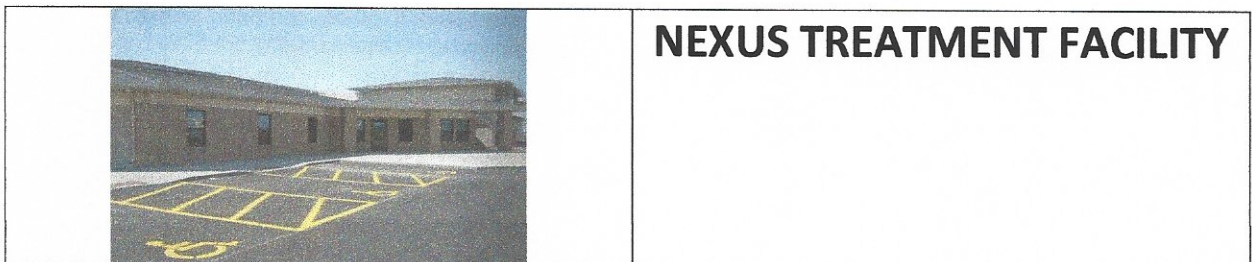
The Gallatin County Work Re-Entry Program (GCRP) began providing services on December 12, 2005. It is a multiple use facility (to include pre-release, work-release, drug court sanction, detention, and re-entry) for adult male offenders. This facility is a 40-bed facility designed to accommodate 40 male offenders from the Montana Department of Corrections.

There were no PREA investigations in 2023 for the Gallatin County Re-Entry Program, the same as the previous year. Clients are educated immediately upon intake regarding the facility's PREA policies. Staff are well trained in communicating with clients and maintaining professional boundaries. PREA refresher training is conducted monthly for all staff.



The START (Sanction, Treatment Assessment, Revocation and Transition) Program provides program services in a safe and secure environment, holds offenders accountable for their actions, and provides placement services that encourage offender accountability, enhance the community transition process and promotes public safety.

In 2023, there were three (3) PREA investigations, which is consistent with the previous years. Two (2) of the investigations were determined to be unfounded, the third was unsubstantiated. Clients are informed of the Zero tolerance policy immediately upon intake and attend PREA education within the first week of arrival. Staff are well educated in professional boundaries as well as the prevention and detection of sexual abuse and harassment.



This 80-bed methamphetamine treatment facility is located in Lewistown, Montana. NEXUS began accepting adult male offenders on June 1, 2007. The program is based on a therapeutic community model of treatment and includes a comprehensive array of correctional programming and services, including food service, transportation, routine medical and dental services, and various other programs such as anger management, family relationships, life skills, criminal thinking errors, and cognitive restructuring groups and counseling.

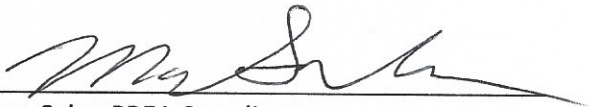
In 2023, there was one (1) substantiated investigation at the NEXUS facility. There were two (2) investigations in both 2022 and 2021. Staff and clients are educated and have a clear understanding of the Zero tolerance policy.

CCCS Inc. is committed to providing a safe and healthy environment for staff and clients. Prevention of sexual assault, abuse or misconduct, and harassment in a CCCS Inc. facility is paramount. CCCS Inc. has a zero tolerance policy toward sexual assault, sexual abuse or misconduct, and/or sexual harassment of clients by other clients or staff. Each facility has a dedicated PREA Manager who is supervised by both the Program Administrator and CCCS, Inc.'s PREA Coordinator. All staff are trained in the prevention and detection of sexual assault, sexual abuse or misconduct, and/or sexual harassment. Through extensive training of all staff, CCCS, Inc. continues to meet and exceed PREA standards. Please allow the above-mentioned information to serve as CCCS, Inc.'s annual review for 2023. These numbers are reviewed and updated annually.



Mike Thatcher, CEO
Community Counseling and Correctional Services, Inc.

March 8, 2024



Marwan Saba, PREA Coordinator
Community Counseling and Correctional Services, Inc.

March 8, 2024